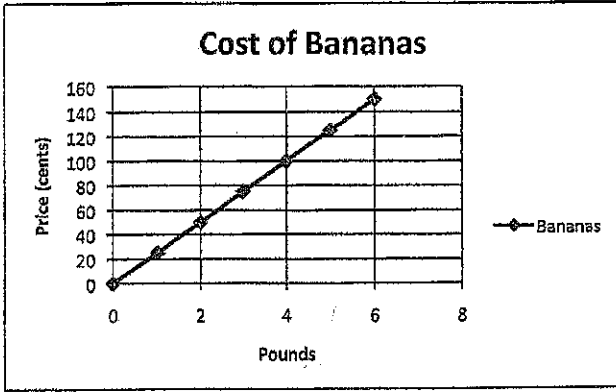


Graph

The graph below represents the cost of bananas. What is the unit rate?



Table

Represent the relationship in the graph using a table.

Equation

Represent the relationship in the graph using an equation.

Equation Check

The price of bananas at another store can be determined by the equation $P = \$0.35n$, where P is the price and n is the number of pounds of bananas. What is the constant of proportionality (unit rate)?

